

Bevin Court Hostel Sheffield



- ◇ Temporary accommodation for up to 66 homeless men aged 18+. This 54 single rooms in the Hostel and 12 one bedroom flats.
- ◇ Advice and Support
- ◇ Activities programme
- ◇ Referrals: we accept self-referrals and telephone referrals
- ◇ We operate an open-door, drop-in policy 24 hours a day, 7 days a week

St Anne's Mission...

“Provide quality support, care and housing services;
promote independence, opportunity and inclusion.”



What is Bevin Court

Bevin Court is a hostel for homeless men aged 18+ who need temporary accommodation. We are here to provide you with accommodation, support, advice, encouragement, education, but mainly to assist you in getting your own secure accommodation which is appropriate for your needs and preferences.

Our staff will assist you with any issues you may have. If they are not able to help directly, they will put you in touch with someone who can.

We have a Keyworker system, which means you will have 2-3 named workers you can discuss issues/problems with. They can also do a support plan with you to help you achieve a goal or just work things through.

Look what's inside your own place?

We have Key Workers who are here to assist you in finding your own accommodation, apply for grants, and continue to support you if you should move in to an on-site flat. There are weekly training kitchens to assist in budgeting, cooking and having a healthy diet.

Dependency Issues

If you have a Drug or Alcohol issue, we can assist. We have a Substance Misuse Worker who can give advice, support and assistance in maintenance and reduction. We have a visiting Needle Exchange van, and Drugs Workers visit from Phoenix futures.

Training & Activities

We have a Training and Activity worker who organises daily activities, three days per week.

- ◇ Competitions with prizes are held at weekends.



Trips Out



Activities



Quizzes

Facilities/Visiting Services and more about St Anne's

Facilities

- ◇ 3 x computers with internet access
- ◇ Snooker and pool tables
- ◇ 2 x TV rooms, table football, darts and games plus an all weather pitch

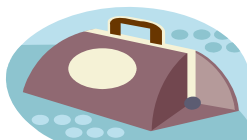


- ◇ Clothing store
- ◇ Visiting mobile library
- ◇ Workshop, laundry, canteen



Visiting Services

- ◇ Doctor
- ◇ Nurse
- ◇ CPN
- ◇ Podiatrist



More about St Anne's

St. Anne's has a reputation for responding to the needs of individuals by developing high quality innovative services. We work in close partnership with health authorities, local authorities and voluntary organisations. St. Anne's remains determined to provide the best possible services at the best value.

Bevin Court is committed to providing a service that is responsible, listening and caring. Every person that has a stake in the project has a right to be treated with respect and dignity irrespective of gender, race, religion, sexuality, disability, age or by reason of being an ex-offender.

How to get to and contact us

Bevin Court,
122 Beighton Road
Woodhouse
Sheffield
South Yorkshire
Tel: 0114 269 2569
Fax: 0114 269 7342
Email: info@st-annes.org.uk
Or visit our website at: www.st-annes.org.uk



Direct to Beighton Road
30 & 123 on Arundel Gate
Back of the Crucible.

Woodhouse—52, 25 & 25A from bus station.

St Anne's is a not for profit, person centred organisation.
We provide a range of services in the North of England to
people who have learning disabilities, mental health
issues, substance use issues or who are homeless.
Last year we supported over 3,000 people.

St Anne's Community Services is a Registered Charity, number 50224 and a
Housing Association registered with the Housing Corporation, number H3158