

Want more information?

To find out more about the Employment and Training Service at RAISE and what other help and courses may be available to you, contact:



RAISE
1st floor, St. Anne's Resource Centre
66 York Street, Leeds LS9 8AA
Telephone: 0113 2431894
FAX: 0113 2416887

We have provision and facilities for the disabled.

St Anne's is a not for profit, person centred organisation. We provide a range of support and care services in the North of England to people who have learning disabilities, mental health issues, substance use issues or who are homeless. Last year we supported over 3,000 people.

St Anne's Community Services is a Registered Charity, number 502224 and a Social Landlord registered with the Tenant Services Authority, number H3158

RAISE
@ St Anne's
Resource Centre
Leeds



Employment and Training courses



Funded by
**Skills
Funding
Agency**



Making a Difference for 40 Years



What is the class about?

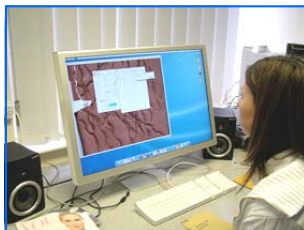


Why do skills matter?

It takes all sorts of skills to achieve what you want in life, whether it's decorating your home, raising children or getting on at work.

Everyone has skills they use every day, even if they don't think about them.

Taking the children to school may use organising skills. Paying bills uses number and budgeting skills. By improving your skills or by learning new ones, you can get on in life and in work.



What happens?

Our Employment and Training sessions are designed to give you the motivation, confidence and skills you need to enter the job market.

The 13 week programme covers a range of training, information, advice and guidance that you will find useful and relevant when applying for jobs.

Sessions include CV writing, job search skills and interview techniques. We also have links with local employers and organisations that can help you find work placements.

Classes take place in a comfortable and friendly learning environment.

When are the classes held?

You can join one of our four classes:

- ◆ **MONDAY:** Afternoon 2.30pm to 4.30pm
- ◆ **TUESDAY:** Afternoon 2.30pm to 4.30pm
Preparation skills for employment
- ◆ **WEDNESDAY:** Afternoon 2.30pm to 4.30pm
- ◆ **THURSDAY:** Morning 11.30am to 1.30pm

St Anne's Mission...

"Provide quality support, care and housing services; promoting dignity, independence, opportunity and inclusion."

Who can get help with Employment and Training?

The sessions at RAISE are open to anyone who feels the need for more skills to help them get a job.

You are eligible for free classes if you are aged 18 or over and receiving benefits. Proof of benefits are required. There may be a small fee if you are not on benefits. Contact us for more details.